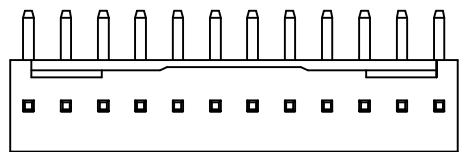
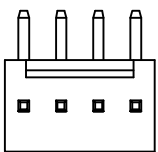


1 2 3 4 5 6 7 8

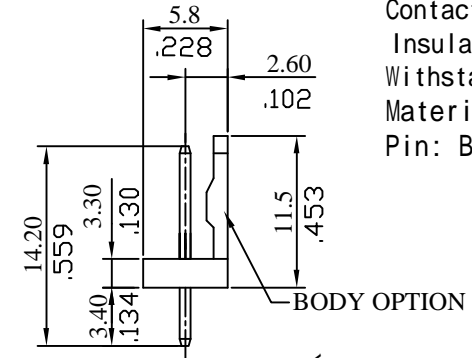
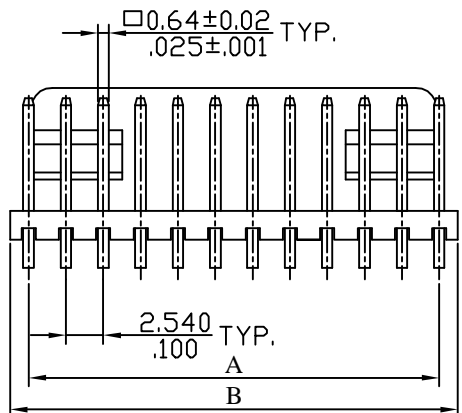
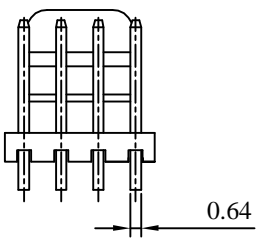
A



**SPECIFICATION**  
 Current Rating: 2A AC, DC  
 Voltage Rating: 250V AC, DC  
 Temperature Range: -25 ° C ~+85 ° C  
 Contact Resistance: 20 m ohms Max.  
 Insulation Resistance: 1,000M ohms Min.  
 Withstanding Voltage: 1,500V AC/minute.  
 Material: Nylon 66, UL94V-2  
 Pin: Brass

A

B



B

C

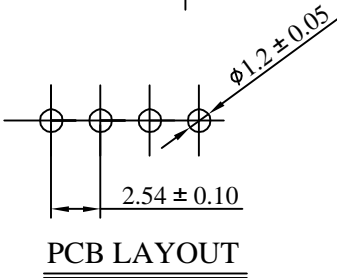
2 THROUGH 5  
CIRCUITS

6 THROUGH 20  
CIRCUITS

Poles	Dimension	
	A	B
2	2.54	5.12
3	5.08	7.66
4	7.62	10.20
5	10.16	12.74
6	12.70	15.30
7	15.24	17.94
8	17.78	20.48
9	20.32	23.02
10	22.86	25.58
11	25.40	28.12
12	27.94	30.68
13	30.48	33.10
14	33.02	35.80
15	35.56	38.34
16	38.10	40.94
17	40.64	43.30
18	43.18	45.90
19	45.72	48.56
20	48.26	50.80

C

D



D

E

**ORDER INFORMATION**

Contact No.	Contact Type	Function	Body Option	Contact Plating	Insulator Color
W2600 — <input type="text" value="20"/>	<input type="text" value="P"/>	<input type="text" value="S"/>	<input type="text" value="Y"/>	<input type="text" value="T"/>	<input type="text" value="W"/>
02-20	P: Non Distribution	S: Straight	Y: W/Back N: W/O Back	T: Tin S: Select Gold G: Gold Flash	W: White

E

F

G

**玄茂科技股份有限公司**  
**HSUAN MAO TECHNOLOGY CO., LTD.**

UNIT		SCALE	PART NAME	
MM INCH		2:1	MX2.54mm WAFER 180 °	
APPD.	CKD.	TOLERANCE	PART NO.	REV.
		± 0.5	W2600-XXPSXXW0	A

G

H

制表日: 2002/12/04

DRAWING. APPROVED  
*Jane*

H

1 2 3 4 5 6 7 8